



MWF-SERIES SUSPENDED WASHER-EXTRACTORS

CONTROLS VIBRATION • HIGH G-FORCE EXTRACTION • SIX CAPACITIES



MWF100J7

UNSURPASSED WASH QUALITY

Milnor's MWF-Series suspended washer-extractors range in capacity from 60-275 lb. (27-125 kg). Available in either E-P Plus® or MilTouch™ controls, Milnor's MWF-Series offers you savings and programming flexibility—without compromising the wash quality you expect from a Milnor.

Read more to see how this suspended washer-extractor product line is ideal for your commercial or industrial laundry application.



MWF77Z7



Save Labor: Milnor's MWF-Series **control options** (E-P Plus® and MilTouch™) allow the operator advanced flexibility by manually creating or altering formulas, which are guided by the controls and promote accurate, proper washing. The display notifies the operator of key benchmarks (wash step, time remaining, etc.), which increases productivity and reduces downtime. Milnor's **tall rib construction** and **precise cylinder speeds** provide excellent MAF (Mechanical Action Factor), which expedites the interchange of wash chemistry and water, for quicker washing and rinsing. The MWF-Series cleans the goods properly the first time, so your laundry and staff can continue to be efficient.



Save on Linen Replacement Costs: The second highest expense in a laundry is the cost of the linen (or to replace it). Milnor's MWF-Series can help you extend your linen life with its safe **chemical injection system**. Chemicals are injected in the rear of the machine (unlike certain brands where chemicals are injected near the front of the machine at eye-level), then diluted and flushed into the sump. This prevents raw chemistry from coming into direct contact with the linen or the stainless steel. In addition to the chemical injection system, the MWF-Series' **spacious wash cylinders** provide more room for lift and drop action and for goods to open up and absorb wash and rinse water - ensuring goods get clean the first time, reducing rewashes and linen fatigue.



Save Energy: Milnor's MWF-Series is highly efficient, reducing your utility costs. The frequency inverter drive allows the motor to reach maximum extraction speed more efficiently, thereby reducing peak electricity amperage draw compared to multi-speed motor machines. Bigger **cylinder perforations** provide (1) better wash quality by promoting excellent interchange of the goods with water and chemistry, (2) better rinsing by allowing rinse water to freely interact with the goods, and (3) better extraction by allowing water to escape from goods easily and quickly. The cylinder design minimizes wasteful rewashes and reduces drying time, all resulting in lower energy costs.



Save Water: Milnor's efficient MWF-Series is also eco-friendly. Milnor's RinSave® water saver feature is standard on all MWF-Series washers (with either E-P Plus® or MilTouch™ controls). The patented software drives the basket toward a precise G-force that "slings" the wash liquor (including water, chemistry, and soil) out of the goods after a wash step. This feature will save up to 2 rinses per load and fill/rinse time. Laundries with the RinSave® feature will get more loads per hour to save you money! **Simple hot and cold water inlets** are used to quickly fill the washer without fill level overshoot. A third water inlet is used to thoroughly dilute chemicals so that raw chemicals do not directly contact and damage linens. Accurate water levels promote proper washing and prevent wasting water.



Save Money (Total Cost of Ownership): Milnor's dynamically tuned suspension features a cutting-edge design that employs a unique, four-point suspension system. The center of mass is located where an imbalance would occur. With **SmoothCoil™ Suspension System**, constructed of highly-engineered fabric and rubber layered coils that provide low natural frequencies, vibration is constantly isolated (delivering smooth operation and performance). Dynamic forces are evenly applied resulting in: minimum vibration, smooth extraction, less wear and tear, and longer machine life. **Tapered roller bearings** have a large contact area - spreading force and contributing to long life. Front and rear bearings are fixed in the same housing, preventing damaging misalignment. Like all Milnor machinery, MWF-Series machines typically last longer because of their legendary ruggedness, thoughtful design, and **dependable quality**.



Work Smarter: Milnor's weigh cell with electronic flow meter feature (optional on MilTouch models) ensures that your machine processes goods efficiently with every single wash. The weigh cell captures the weight of the goods loaded in the machine. Once loaded, the algorithm in the controller calculates the **proper proportion of water to goods** based on weight. The electronic flowmeter ensures that the proper amount of water is delivered to the machine based on the weight of goods. Likewise, wash chemistry is adjusted to correspond to the weight of the goods in the machine. This means loads that are smaller than the machine's maximum capacity are washed in the proper amounts of water and wash chemistry, thus saving on wash liquor - working smarter to save you money.

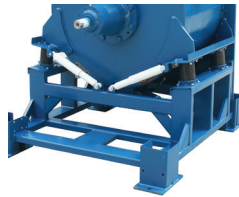
THOUGHTFUL, RELIABLE DESIGN

RINSAVE® WATER SAVER



This patented software drives the basket toward a precise G-force that "slings" the wash liquor (including water, chemistry, and soil) out of the goods after a wash step. This feature will save up to 2 rinses per load and fill/rinse time. Laundries with the RinSave® feature will get more loads per hour to save you money!

4 POINT SMOOTHCOIL™ SUSPENSION SYSTEM



Rubber springs are used to isolate vibration and deliver smooth operation and performance. Plus, they resist corrosion and are virtually maintenance free.

SAFE CHEMICAL INJECT SYSTEM



The MWF-Series peristaltic inlet prevents corrosion and allows for the proper injection of chemistry for the formula and goods type.

SIMPLE WATER INLETS



These simple hot and cold water inlets allow your wash formula to achieve accurate water levels for every cycle. A separate water valve allows for the safe transport of chemistry into the wash liquor, which preserves linen life.

SUPERIOR PERFORATION PATTERN



MILNOR

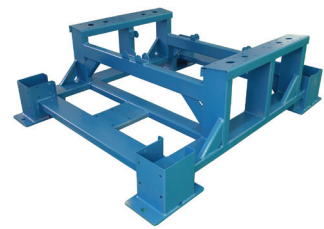


TYPICAL COMPETITOR



The basket's greater open area allows for suspended solids to be rinsed away from the goods quickly, saving valuable time and fresh water.

SOLID, INDUSTRIAL FRAME



Milnor's MWF-Series suspended washer-extractor frames feature heavy-gauge steel for maximum durability.

COMPREHENSIVE CONTROLS

E-P PLUS®



E-P Plus® control is equipped with 30 pre-programmed formulas (including 10 each for eight industries) and allows the operator advanced flexibility. The E-P Plus® operator may manually create or alter formulas, which are guided by the control itself to achieve accurate and proper washing. E-P Plus® also features universal temperature control, programmable cool down, and programmable bath soak and overnight soak. The two-line display notifies the operator of key benchmarks (wash step, time remaining, etc.), which increases productivity and reduces downtime.

MILTOUCH™



MilTouch™ control utilizes resistive touch screen technology and full VGA resolution to clearly display current machine status info (including total formula time and time elapsed). With complete programming flexibility, MilTouch™ touchscreen control formulas can be developed on a PC, saved to USB external memory and uploaded with a screen touch. With intuitive fault diagnosis and relevant troubleshooting suggestions, the MilTouch™ control streamlines employee training and eliminates operator guesswork.

WHY CHOOSE MWF-SERIES?

- Suspended frame allows for above-ground level installation*
- Tapered roller bearings are aligned in a rigid housing (ensures proper basket alignment)
- Model designs have been tested in an out-of-balance state for over 1,000 hours at maximum-extraction speed
- Superior wash cylinder design yields greater mechanical action (reduces rewashes for prolonged linen life)
- Precise and easy-to-use controls
- Six capacities to suit your laundry's needs
- 5/3 Warranty Plan

SPECIFICATIONS	MWF27J8*	MWF45J8*	MWF63J7*	MWF63C7*	MWF77J7*	MWF77C7*	MWF100J7*	MWF100C7*	MWF125J7*	MWF125C7*
	MWF27Z8**	MWF45Z8**	MWF63Z7**	MWF63Y7**	MWF77Z7**	MWF77Y7**	MWF100Z7**	MWF100Y7**	MWF125Z7**	MWF125Y7**
Max capacity-lbs. (kg) +	60 (27)	100 (45)	140 (63)	140 (63)	170 (77)	170 (77)	220 (100)	220 (100)	275 (125)	275 (125)
Cylinder diameter-ins. (mm)	30 (762)	36 (914)	42 (1067)	42 (1067)	42 (1067)	42 (1067)	48 (1219)	48 (1219)	48 (1219)	48 (1219)
Cylinder depth-ins. (mm)	22 (559)	26 (660)	26 (660)	26 (660)	32 (813)	32 (813)	32 (813)	32 (813)	40 (610)	40 (610)
Gross cylinder volume-cu. Ft (L)	9 (255)	15.3 (434)	20.8 (590)	20.8 (590)	25.7 (727)	25.7 (727)	33.5 (948.6)	33.5 (948.6)	42 (1186)	42 (1186)
Motor-HP (kW)	5 (3.7)	10 (7.4)	15 (11.2)	15 (11.2)	15 (11.2)	15 (11.2)	20 (14.9)	20 (14.9)	25 (18.6)	25 (18.6)
Wash Speeds-RPM++	38-43	38-43	36-40	36-40	36-40	36-40	30-38	30-38	31	31
Distribution-RPM++	68	65	60	60	60	60	66	66	65	65
Extract Speeds-RPM++	390-580	375-540	400-550	400-550	400-550	400-550	320-664	320-664	320-664	320-664
Max. Final Extract-RPM++	840	765	710	710	710	710	664	664	664	664
Max final G Forces	300	300	300	300	300	300	300	300	300	300
Drain valve-ins. (mm)	3 (76)	3 (76)	3 (76)	4.5 (114)	3 (76)	4.5 (114)	4 (102)	4.5 (114)	4 (102)	4.5 (114)
Inlet connection-ins. (mm)	0.75 (19)	0.75 (19)	1.25 (31)	1.25 (31)	1.25 (31)	1.25 (31)	1.5 (38)	1.5 (38)	1.5 (38)	1.5 (38)
Width-ins. (mm)	39.63 (1007)	49.38 (1254)	57.6 (1463)	67.64 (1718)	57.6 (1463)	67.64 (1718)	70 (1778)	78.94 (2005)	70.08 (1780)	78.94 (102)
Depth-ins. (mm)	57.51 (1461)	67.43 (1713)	71.46 (1815)	72.09 (1831)	77.43 (1967)	77.95 (1980)	79.65 (2023)	89.76 (2280)	90.98 (2311)	101.69 (2583)
Height-ins (mm)	65.3 (1658)	74 (1880)	82 (2083)	87.95 (2234)	82 (2083)	87.95 (2234)	90.59 (2301)	93.74 (2381)	92.32 (2345)	93.82 (2383)
Forward Tilt-degrees	—	—	—	13.5	—	13.5	—	13.5	—	13.5
Approx. net weight-lbs. (kg)	1851 (840)	3524 (1600)	5066 (2300)	5286 (2400)	5396 (2450)	5640 (2560)	7247 (3290)	8150 (3700)	7930 (3600)	8943 (4060)

*E-P Plus® control **MilTouch™ control +Depending on density and soil contents of goods ++Approx. fixed speeds for E-P Plus models;
 MilTouch features programmable speeds ++Standard accessories
 Specifications and appearance subject to change without notice. Consult factory for static load and dynamic forces.

Printed in the U.S.A.
 © Pellerin Milnor Corporation
 Brochure B22SLI4001/19206



Pellerin Milnor Corporation
 P.O. Box 400, Kenner, LA, 70063-0400 USA
 Phone: 504.712.7656 • 800.469.8780
 Email: milnorinfo@milnor.com
 www.milnor.com